

LACOMBE COMMERCIAL
ZONING PLAN
OF
SUBDIVISION
OF PART OF

2008
LACOMBE - ALBERTA

N.E. 1/4 SEC. 9, TWP. 41, RGE. 28, W.4.M.



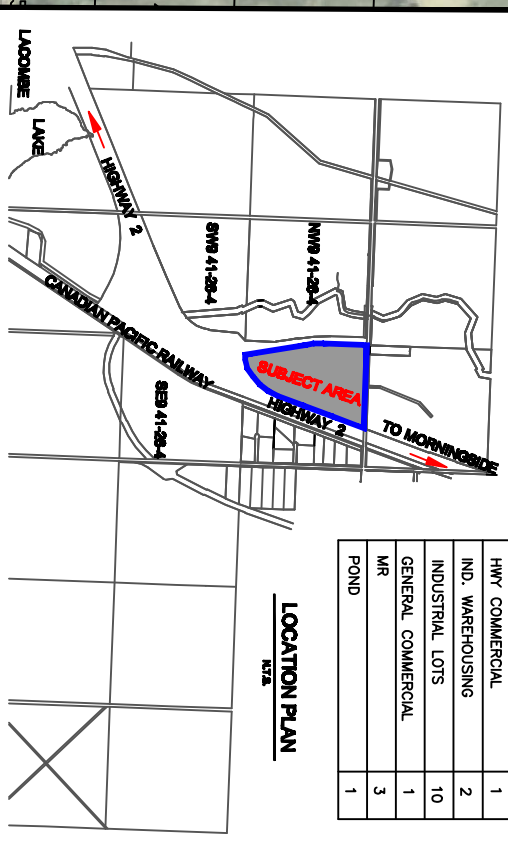
LEGEND

AREAS AFFECTED BY THIS PLAN IS SHOWN
DIMENSIONS ARE IN METERS AND DECIMAL THEREOF

AREAS	ha	ac
TOTAL	30.32	74.91
HWY COMMERCIAL	6.88	16.51
IND. WAREHOUSING	4.11	10.15
CONDO BAYS	5.59	13.82
INDUSTRIAL LOTS	5.17	12.77
GENERAL COMMERCIAL	4.30	10.63
MR/LANDSCAPING	0.43	1.06
STORM MANAGEMENT	4.04	9.98
ROAD		

LOT TYPE	NO.
HWY COMMERCIAL	1
IND. WAREHOUSING	2
INDUSTRIAL LOTS	10
GENERAL COMMERCIAL	1
MR	3
POND	1

LOCATION PLAN



DRAWN BY : DM
CHECKED BY : JL
DATE : 14 MAR 08

CHALLENGER
CONSULTANTS LTD.

EDMONTON, ALBERTA
(780) 454-5111

JOB No.: **32100**

DWG NUMBER: W-14-2008 - 1528 en

DRAWING NAME: 32100 BASEPLAN (04/07/08).dwg
LAYOUT: ZONING (11/17)